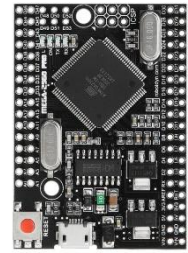




EnM Industry
www.enmindustry.de



Mega2650PRO Datasheet

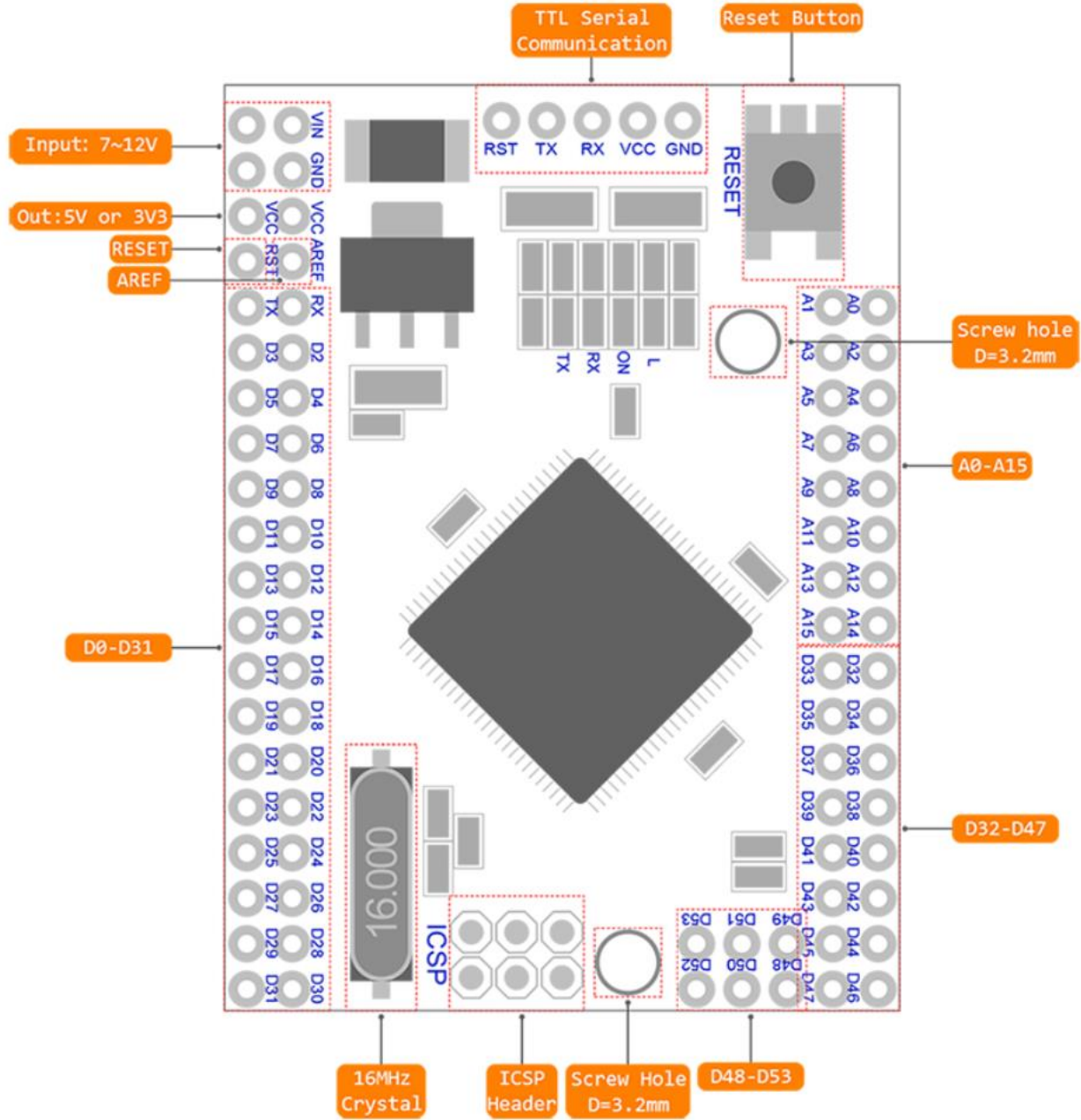
Mega 2650 PRO mini 5V ATMEGA 2650-16AU Development Board

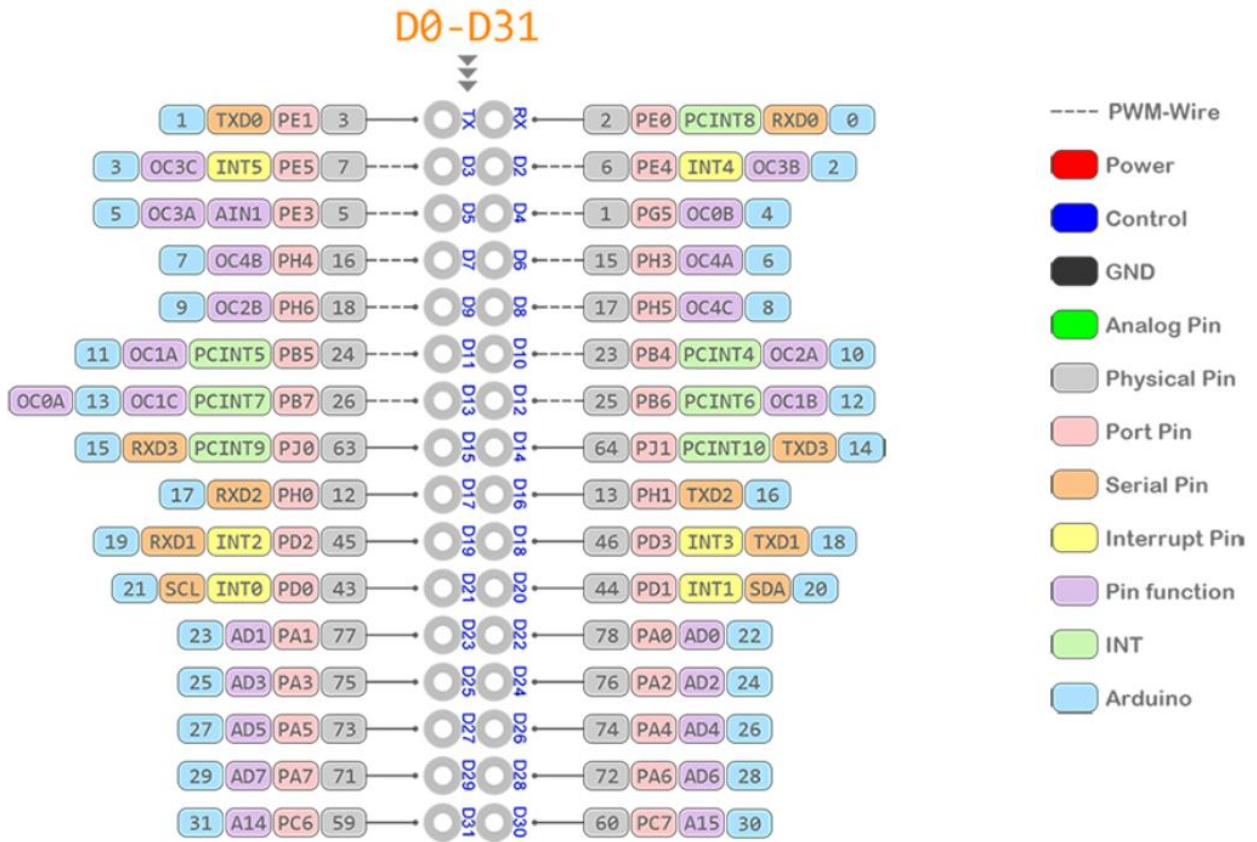
- Embedded version of Mega 2560 CH340G/ATmega2560 compatible with Arduino Mega 2560 board, built on Atmel ATmega2560 microcontroller and USB-UART interface chip CH340G.
- The board has a compact size of 38x55mm. It is a good solution to make the final project on the prototype board.
- The functionality of the board is similar to the Arduino Mega2560. It is an embedded board and uses the original chip of ATmega2560 (16MHz).
- The board uses the chip CH340G as a UART-USB converter. Its function in the frequency 12MHz, leads to a stable data exchange (the driver must be installed).
- Mega PRO (Embedded) 2560 CH340G/ATmega 2560 can be connected to the computer through micro USB cable.
- Power supply of the board is via the microUSB connector or via pin headers. The voltage regulator (LDO) can handle an input voltage of 6 V to 9 V (peak 18 V) DC. The output current is over 800 mA at 5 V (please note that the higher the input voltage, the lower the output current). This will provide reliable performance in the initial projects.

Microcontroller	ATmega 2560
USB-TTL converter	CH340
Power Out	5V-800mA
Power In	5V
Power In VIN/DC Jack	5V
Power Consumption	5V 220mA
Logic Level	5V

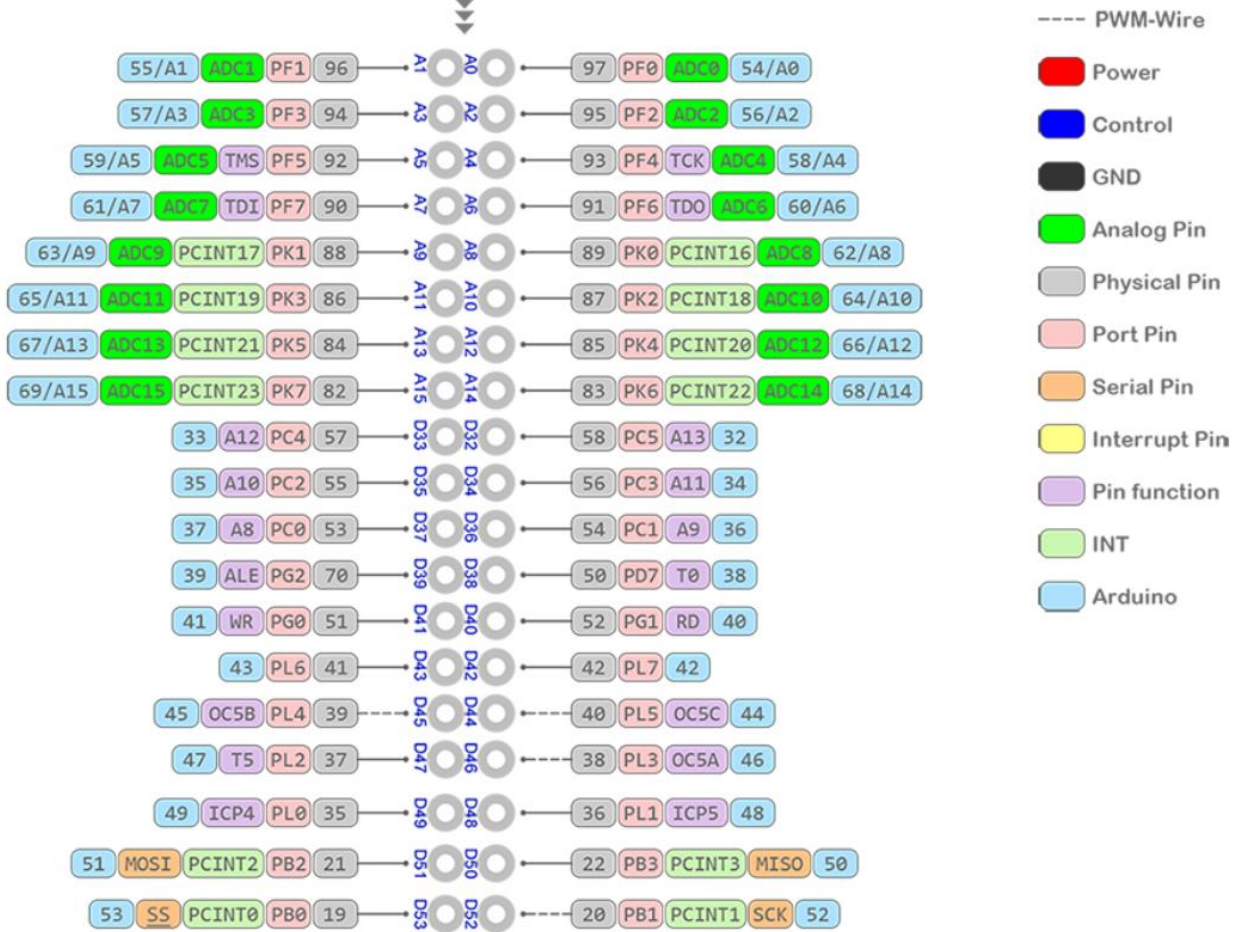
USB	Micro USB
Clock Frequency	16MHz
Operating Supply Voltage	5V
Digital I/O	54
Analog I/O	16
Memory Size	256kb
Data RAM Type/Size	8Kb
Data ROM Type/Size	4Kb
Interface Type	ISP
Operating temperature	-40C°/+85C°
Board's Size	38×54mm

Pinout Diagram

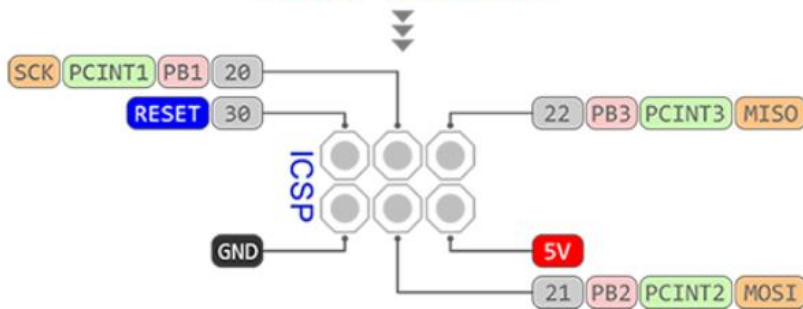




A0-A15 D32-D47 D48-D53



ICSP PINOUT



Dimension Diagrams

